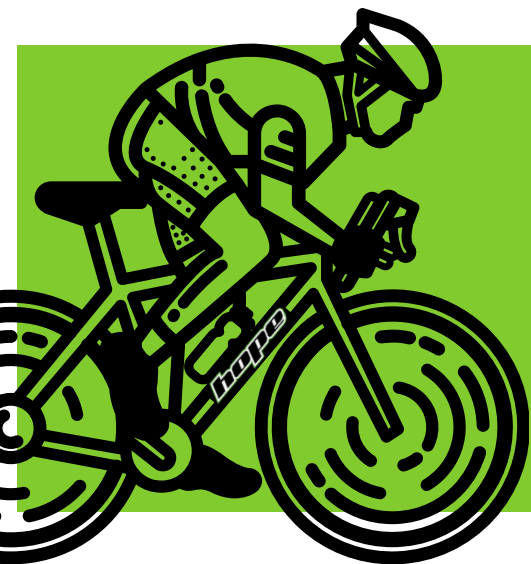




SHIBDEN CC

No-Nonsense Summer 'Cross

Tuesday 25 & Wednesday 26 May 2021



SHIBDEN CC

NO-NONSENSE

Let's race!

nonensenseraces.co.uk



SHIBDEN CC

Welcome

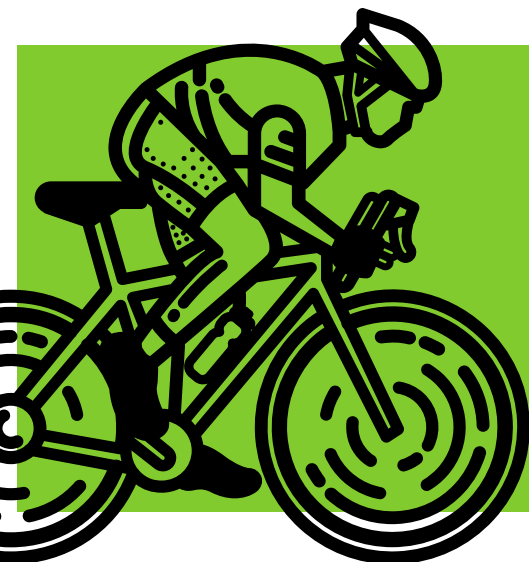
Welcome to the second No-Nonsense summer Cyclo-Cross event of 2021. Thank you for supporting us.

Please read the following information carefully as it will help you to stay safe and enjoy your racing all the more.

After the rain on day one of our previous event, we'll be hoping to find a bit of mud to add to your course, which we will be freshening up with a few changes of direction and crafty corners.

As ever, we are putting these events on for the love of the sport and we'd really appreciate some help on the Wednesday evening in taking down and gathering in the course. It's a race against time to get it all in before dark and a few extra hands really make a difference. Thank you to those who stayed back last time and thanks in advance for help this time around.

The Shibden CC Team



SHIBDEN CC

NO-NONSENSE

Let's race!

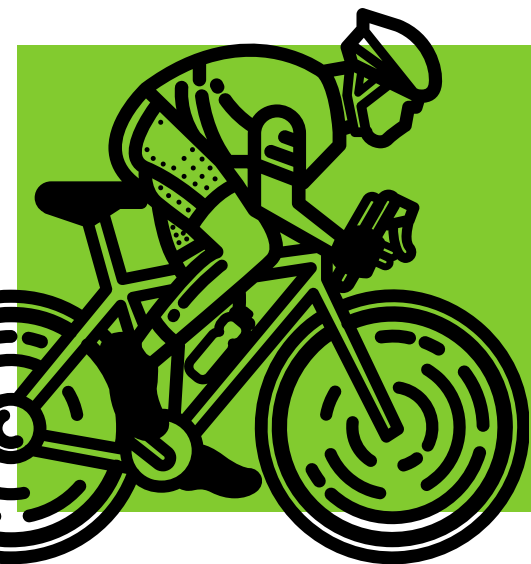
nonensenseraces.co.uk



SHIBDEN CC

Rider Info - At A Glance

- There are no entries on the day, all riders must be pre-registered online and accepted by the organisers.
- Know your race time - please do not arrive more than an hour before your race.
- All racing is single bike racing, there are no pits and jet washing is banned from the entire site.
- No assistance is permitted on the start finish line bring a bag to put your outer garments in. Which can be collected after the race, or by family members after the race has started.
- After the race go into the finishing grid and remove your timing chips and numbers with pins, which should be placed in the bins provided.
- After the completion of the race, please exit the car park within half an hour after the completion of your race.
- Remember to social distance and sanitise on a regular basis and stay safe.
- Smile, be nice to everyone, say thankyou and have a great time!



SHIBDEN CC

NO-NONSENSE

Let's race!

nonensenseraces.co.uk

Location - *site map*



The event venue is Hunsworth Show ground, Hunsworth Lane, Bradford, BD4 6RN. This is half a mile from M62 junction. Follow signs for the A58 Leeds, then signs for Hunsworth (left turn at the second set of lights after leaving the motorway). Please note, the map above correct is for car-park, sign-on and start locations. Course details may differ.



SHIBDEN CC

NO-NONSENSE

Let's race!

nonensenseraces.co.uk



Schedule

Tuesday 25 May

18.00 - 18.30 - course open for inspection

Race 1 @ 18.40 - Under-8

Race 2 @ 19.10 - Under-10 & Under-12

Race 3 @ 19:45 - Under-14 & Under-16

Wednesday 26 May

17.45 - 18.30 - course open for inspection

Race 1 @ 18.45 - Junior, Senior & Vet-40 Men

Race 2 @ 19.45 - Women & Vet-50/60/70 Men

Results

Will be published after every race on the Smartiming website -

<http://results.smartiming.co.uk/> - and on our own website

www.nononsenseraces.co.uk



SHIBDEN CC

NO-NONSENSE

Let's race!

nononsenseraces.co.uk



Rider Information

- **Introduction** COVID-19 is an infectious disease caused by a newly discovered coronavirus. This disease is affecting every area of society and the British Government has taken steps to control the virus by introducing restrictions.
- **Statement of Intent** No nonsense cyclocross aim is to provide a Cyclo-Cross event adhering to current British Cycling guidance and has introduced procedures to reduce the risk of transmission between volunteers, cyclist, and support personnel.
- **Organisation** No nonsense Cyclo-Cross have formed a Coronavirus (COVID-19) Management Team to ensure that all aspects of Coronavirus (COVID-19) and its effect on the event considered
- **Event Details** It is the aim of No nonsense cyclo-cross to put on a series of summer evening Cyclo-Cross events at the same venue. The events run over a two-day schedule.

Facilities

- **General Site Equipment:** Porta-loos in car park, Sign-on Gazebo, Tables, Signage.
- **Course Equipment:** Stakes, Tape rolls, bell, lapboard - our thanks to Hope for supplying additional course tape.
- **Sanitising Equipment:** Gel, Sprays, wipes, signage



SHIBDEN CC

NO-NONSENSE

Let's race!

nonnenseraces.co.uk



On Arrival

- The site has one entrance which leads straight to the car park.
- Signing on will be undertaken from a gazebo which will be located in the car park. The event is pre-registration only. On entry into the car park cars will stop at the gazebo and will be issued with race numbers and timing chips. Please sign-on in your vehicle - please don't park and then attempt to sign-on on foot. The area has ample parking and cars will be positioned to ensure social distancing can be maintained. A one-way system for parking will be introduced. The one-way system will include riders exiting the car park to go on to the course
- Access to the car park is permitted to riders 1 hour before the start of their race, and riders will be expected to leave half an hour after the completion of their race.
- There will be no podiums/prizes on the day.
- The course will have an entrance and exit to prevent riders crossing when accessing and egressing the race area.
- There will be a start grid and finish grid to allow sufficient social distancing before and after the race.



SHIBDEN CC

NO-NONSENSE

Let's race!

nonenserraces.co.uk



Race Protocols

- All riders will be pre-registered and gridded before the event.
- Riders will not be permitted into the car park until 1 hour before they are scheduled to race and must leave the car park 30 minutes after the completion of the race.
- Families with more than 1-member racing will be allowed to enter the carpark 1 hour before the first member races and leave 30 minutes after the last member races.
- All races are single bike races and no external mechanical assistance is permitted.
- Jet washing is banned from the entire site, including the car park.
- The start grid will be spray painted into 1.5m wide lanes and riders will grid in the centre of the lane, giving them the 1m social distancing required. The grid will be 10 wide and up to 8 deep. No external assistance will be allowed at the gridding stage, All riders should bring a bag to remove outer garments, they do not wish to race in, and place at the side of the grid, these can be collected after the race has been completed.
- In addition to the start grid there will be a finishing funnel. Riders will be funnelled into the lanes and remove their chips and numbers, with pins attached, and place them in bins provided by the chip timing company.
- Riders can then return to the start grid and collect their discarded outer garments - alternatively, outer garments can be collected by family members after the race has started.
- Post-race, riders will leave the course via the course exit and return to the car park.



SHIBDEN CC

NO-NONSENSE


Let's race!

nonensenseraces.co.uk

How The Grid Works

Lanes

	1	2	3	4	5	6	7	8	9	10
	11	12	13	14	15	16	17	18	19	20
	21	22	23	24	25	26	27	28	29	30
	31	32	33	34	35	36	37	38	39	40
	41	42	43	44	45	46	47	48	49	50
	51	52	53	54	55	56	57	58	59	60
	61	62	63	64	65	66	67	68	69	70



ROW

The arm number you receive correlates to the numbers in the start grid. Poles at the side of each row denote the row numbers. For easy, safe and efficient gridding, please note that your rider number corresponds to the row and column you are in - for example, 33, highlighted, is in the third column and the third row. When you are called up at gridding, please go to your grid position and maintain social distancing.



SHIBDEN CC

NO-NONSENSE

Let's race!

nonensenseraces.co.uk



Commissaires, Marshals & Volunteers

Will wear hi-visibility vests and are there to ensure everyone follows the guidelines set out in this risk assessment. Anyone who does not abide by these guidelines may be ejected from the event, and all future events in the series.

Covid-Precautions

- The setup of the course will be undertaken on Tuesday. The event will be utilising tape and stakes..
- The operatives undertaking course set up will observe the government social distancing recommendations.
- The Porta-loo's will be sprayed and wiped with antibacterial spray and wipes. Outside there will be a sanitising station.
- A sanitising station will also be placed by the entry to the car park.
- Prior to the event the timing chips will be sprayed with an anti-bacterial spray.
- Race numbers, with pins, plus timing chips must be returned. They are to be placed in the buckets provided as the riders exit the course to the car park.
- Numbers and chips will be placed in individual envelopes prior to to issue to the riders.



SHIBDEN CC

NO-NONSENSE

Let's race!

nonensenseraces.co.uk